

## Thameslink 2000 - Borough Market Viaduct

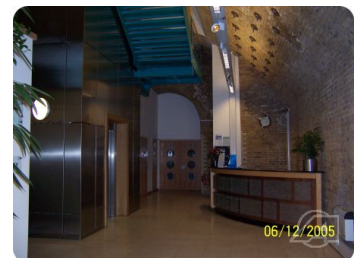
An example of Alltask's ability to deliver complete turnkey projects was its success (via a subcontract from one of Europe's largest construction conglomerates) in being awarded the package to rejuvenate a very tired, rundown, redundant railway arch to become a dynamic, modern and functional working environment and main reception to one of London's largest construction infrastructure projects, Thameslink 2000 project at Borough Market in Southwark.

Work involved the complete gutting of the arch, to a bare carcass. Then we installed hundreds of stainless steels reinforcement fixings for roof and structural stabilisation and broke through the arch roof for the installation of a lift and emergency staircase. Above the arch, we built new structure on the upper level and a steel framed, covered walkway at the Clients point of entry into their office accommodation.

The trades involved in the building works were partitioning, suspended ceilings, skirting, dado rails, interior & exterior decorating, electrics, plumbing, vending points, kitchen areas, tiling, toilet areas, glazing, flooring, carpet tiles, vinyl flooring, telecoms installation and cable data installation.

Finally, we undertook civil engineering works for drainage and a designated car parking area including black top, white lining and the associated traffic management.

The contract was finished 3 weeks ahead of the original 24 week programme.



### Useful Links:

<http://www.tfl.gov.uk/rail/initiatives/thameslink.shtml>

<http://www.networkrail.co.uk/engineeringprojects/tl2k/tl2k.htm>

<http://www.tl2000inquiry.org.uk/>