



Protecting London's Skyline

BLACKFRIARS BRIDGE

Scaffolding Works, London

Iconic landmarks and historic buildings all require some level of repair at some point in their lives. But, when this important renovation work means the need for them to be covered in large amounts of scaffolding and sheeting to allow access, it can take away from the beauty of the surroundings.

For this very reason, our Alltask scaffolding experts paid extra care to aesthetic appearances during the construction of the complex scaffolding which was erected at the historic Blackfriars Bridge in London.

Following the success of a project at Rochester Bridge in Kent, FM Conway, Alltask and Taziker came together once more to deliver the vital project.

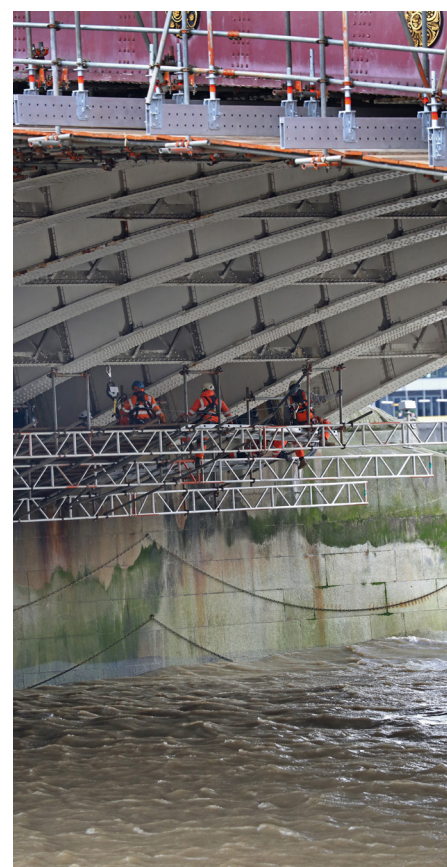
Our work involved a fully suspended, encapsulated access package to facilitate the complete refurbishment of Blackfriars Bridge which would restore this historic London landmark to its former glory.

Works commenced on span two of the bridge in January 2022, with encapsulated suspended access scaffolding constructed, ready for the team at Taziker to blast and paint the structure.

A complex structure in itself, the scaffold around span two was erected and encapsulated following a detailed design provided by Prime Scaffold and Structural Designs Limited, our scaffolding design engineers.

The scaffold structure took 11 weeks to complete, while work on the remaining four spans of the bridge is ongoing and will take a further three years to finish.

Originally built in 1869, Blackfriars Bridge has undergone many modifications and refurbishment schemes over the years, and the team at Alltask was absolutely delighted to be a part of this work.



CLIENT • FM CONWAY
 PROJECT • BLACKFRIARS BRIDGE
 LOCATION • BLACKFRIARS ROAD, LONDON



01634 298000
enquiries@alltask.co.uk
www.alltask.co.uk



Steve Wood, Senior Contracts Manager at Alltask said: "Throughout the whole project, every care and consideration was given to making sure that such a large and complicated scaffolding structure had a minimal impact on its immediate environment.

While the coverings obscured what was a very complex piece of bridge scaffolding design, it was pleasing to see that the scaffolding didn't pose an eyesore on what is an iconic London skyline."



KEY PROJECT FACTS



OVER £160K WORTH OF LAYHER FLEX BEAM COMPONENTS.



LAHYER FLEX BEAMS MANUFACTURED IN GERMANY.



LAHYER FLEX BEAMS ARE A SINGLE UNIT WITH A HIGH LOAD CAPACITY THAT NEEDS NO ADDITIONAL LACING AND BRACING.



COLLABORATIVE WORKING WITH OUR CLIENTS FROM THE DESIGN STAGE TO INSTALLATION.



SPAN 2 - IN EXCESS OF 4500 INCIDENT/ACCIDENT-FREE MAN-HOURS DURING SCAFFOLDING INSTALLATION



ENCAPSULATION WAS FORMED USING AN ENVIRONMENTALLY FRIENDLY FLAME RETARDANT SHRINK WRAP TO ALL ELEVATIONS.



PRECISION PLANNING TO ENABLE THE UNOBSTRUCTED USAGE OF THE BRIDGE.



ALL OPERATIVES WERE FULLY TRAINED SPECIFICALLY FOR THE TASK.

CLIENT • FM CONWAY
PROJECT • BLACKFRIARS BRIDGE
LOCATION • BLACKFRIARS ROAD, LONDON

