



## Overcoming Challenges at Ouse Valley Viaduct

# OUSE VALLEY VIADUCT

## Alltask Support the Restoration of Ouse Valley Viaduct

Alltask is providing ongoing support for our client, Octavius Infrastructure Ltd as part of their brick and stonework repair and restoration scheme to arches 3-8 of the Grade II listed Ouse Valley Viaduct, in Haywards Heath, West Sussex in a bid to revive the historic viaduct back to its former glory.

The Ouse Valley Viaduct, located between Haywards Heath and Balcombe, is an iconic structure comprising 37 identical arches. It stands at an impressive height of 29 meters and stretches 450 meters in total. Originally constructed as part of the London to Brighton railway line between July 1838 and July 1841, it was designed to carry trains over the River Ouse. It stands as a testament to the engineering marvels of its time, using an estimated 11 million bricks in its construction.

Restoring such a historic and architecturally significant structure poses numerous challenges, including:

### Preservation

Ensuring that the restoration work

preserves the viaduct's heritage value and complies with Grade II listing requirements.

### Access and Safety

Providing safe and efficient access for workers to carry out extensive brick and stonework repairs across arches 3-8 while minimising disruptions to train services.

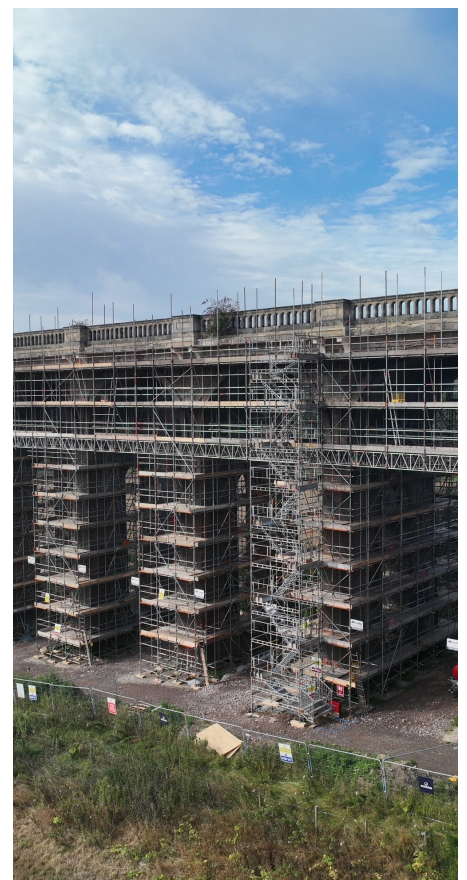
### Structural Integrity

Ensuring that the viaduct remains structurally sound during the repair process, considering its age and historical significance.

Alltask has expertise in scaffolding and temporary access solutions and plays a vital role in overcoming any challenges.

### Scaffold Installation

We have installed multiple access scaffolds and lifting frames custom-designed to meet the specific needs of the restoration project. These structures offer secure and flexible access to workers throughout the repair process.



- CLIENT • OCTAVIUS INFRASTRUCTURE LTD
- PROJECT • OUSE VALLEY VIADUCT
- LOCATION • WEST SUSSEX



01634 298000  
enquiries@alltask.co.uk  
www.alltask.co.uk



### Safety Measures

Safety is paramount in such projects. Alltask's scaffolding solutions not only facilitate access but also provide protection for workers, ensuring their well-being during the repair work.

### Compliance and Expertise

Alltask ensures that all scaffolding and access solutions comply with relevant regulations and standards. We work closely with external design consultants, Prime Scaffold & Structural Designs Limited, to develop temporary work designs that meet the project's unique requirements.

The completion of the first phase of the scaffolding works, marks a significant milestone in the restoration project.

We continue to support our client Octavius Infrastructure Ltd in the restoration of the Ouse Valley Viaduct, demonstrating our expertise in providing scaffolding and temporary access solutions for historically significant projects. The successful completion of the initial phase demonstrates our commitment to preserving architectural heritage and ensuring the structural

integrity of iconic structures like the Ouse Valley Viaduct. As the restoration project continues, we remain a valuable partner in helping to restore historic landmarks for generations to come.



- CLIENT • OCTAVIUS INFRASTRUCTURE LTD
- PROJECT • OUSE VALLEY VIADUCT
- LOCATION • WEST SUSSEX